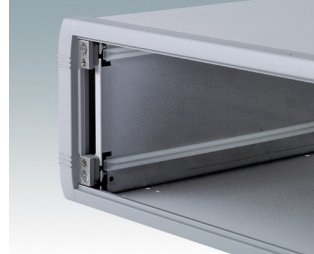
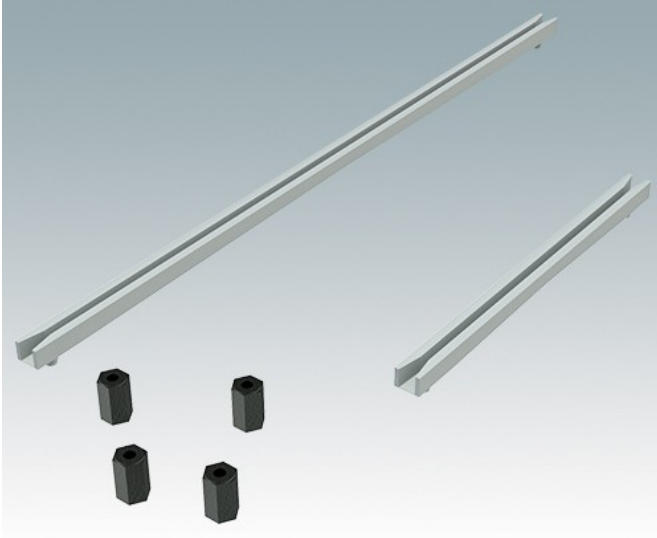
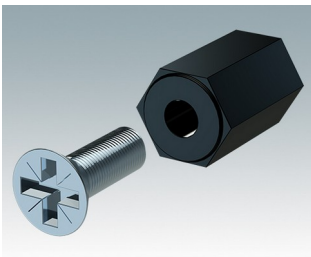


Universal-Zubehör zur Montage von Leiterkarten in alle Gehäuse

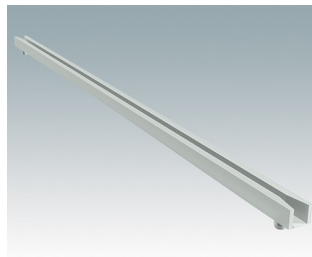
- Leiterplatten-Abstandshalter, M3, Kunststoff, 10 mm hoch
- Leiterkartenführungen zum Einrasten für 1,6 mm dicke Leiterkarten



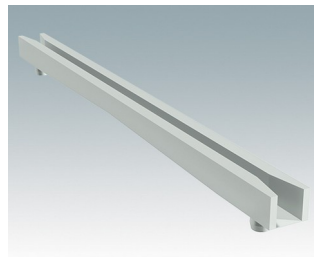
Versionen



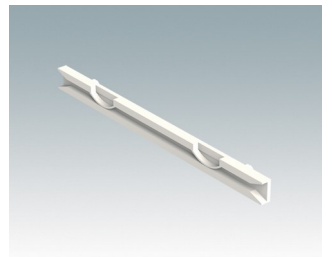
M5600001
Leiterkarten Montage-Set
PA 6
Schwarz RAL 9005



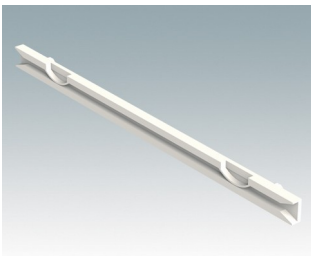
M5700202
Kartenführung, 216mm
PA 6/6 (UL 94 V-2)
Weiß



M5700203
Kartenführung, 102mm
PA 6/6 (UL 94 V-2)
Weiß

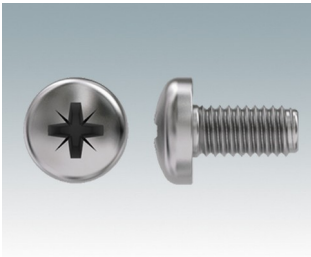


M6490010
Kartenführung, 102mm
PA 6/6 (UL 94 V-0)
Blank
101.6x7.5x3.5mm



M6490020
Kartenführung, 140 mm
PA 6/6 (UL 94 V-0)
Blank
139.7x7.5x3.5mm

Zubehör



M5600010

PCB-Befestigungsschrauben,

M3

Stahlmetall

Verzinkt

6mm

Technische Änderungen vorbehalten. © OKW Enclosures Ltd